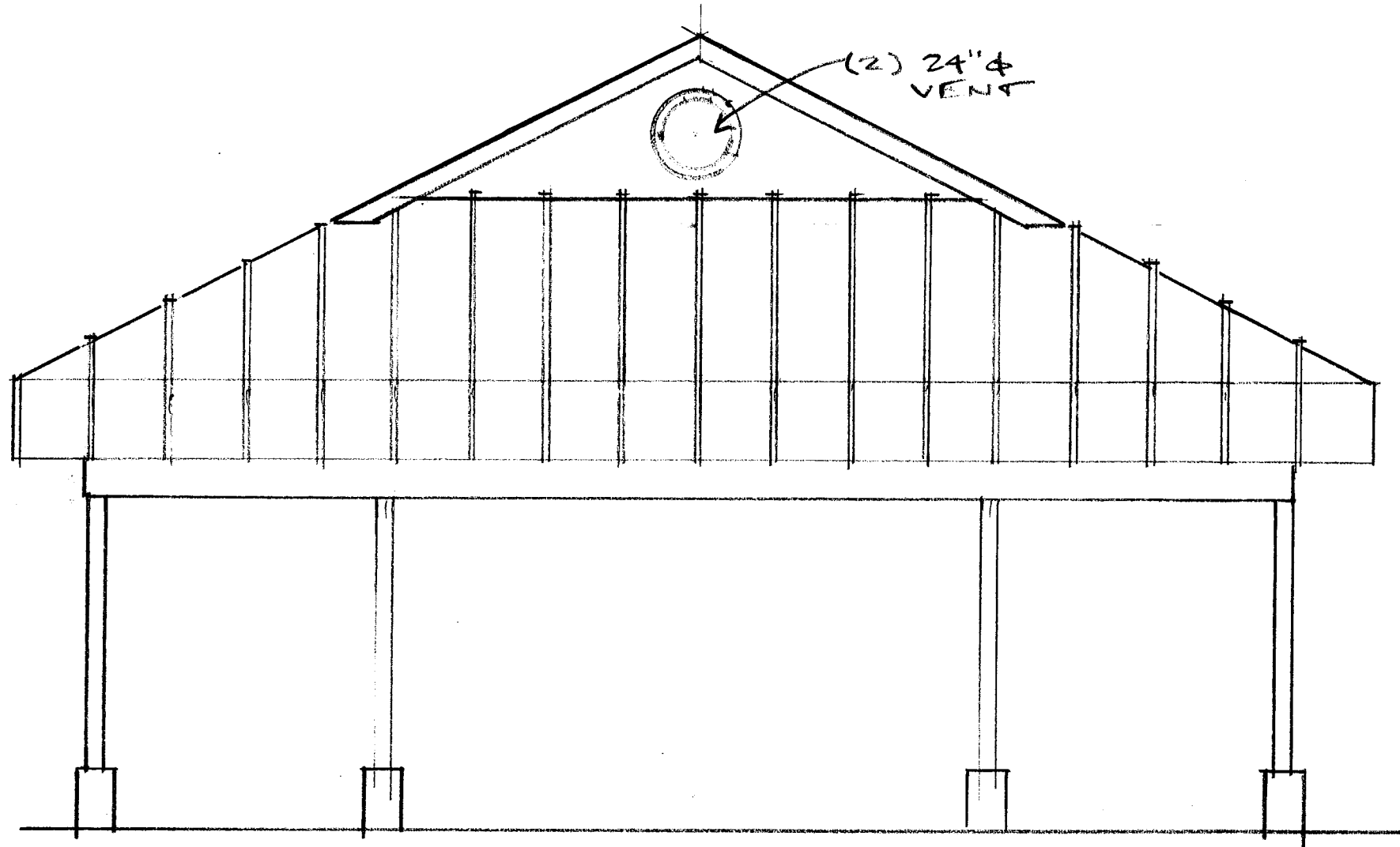


FIREMEN'S PAVILION
 POINT GRATIOT
 CITY OF DUNKIRK, NY

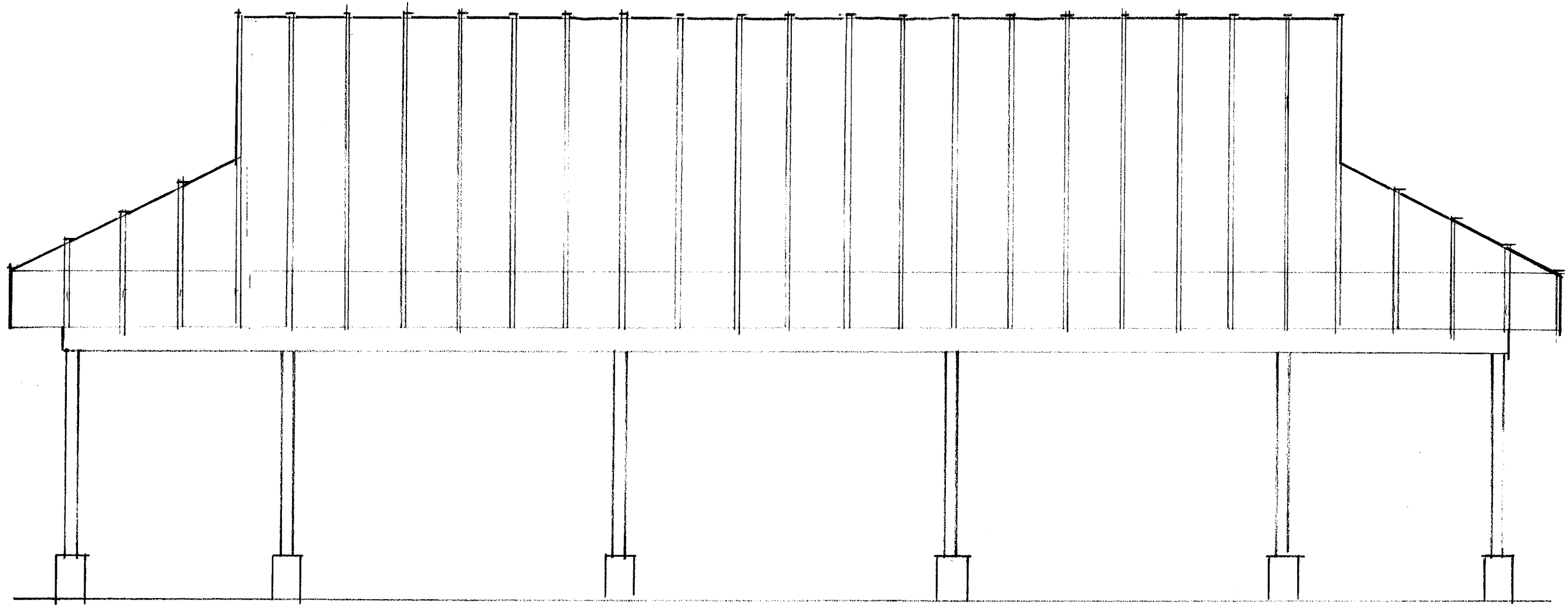
FEB 23, 2023



END ELEVATION 1/4"=1'-0"

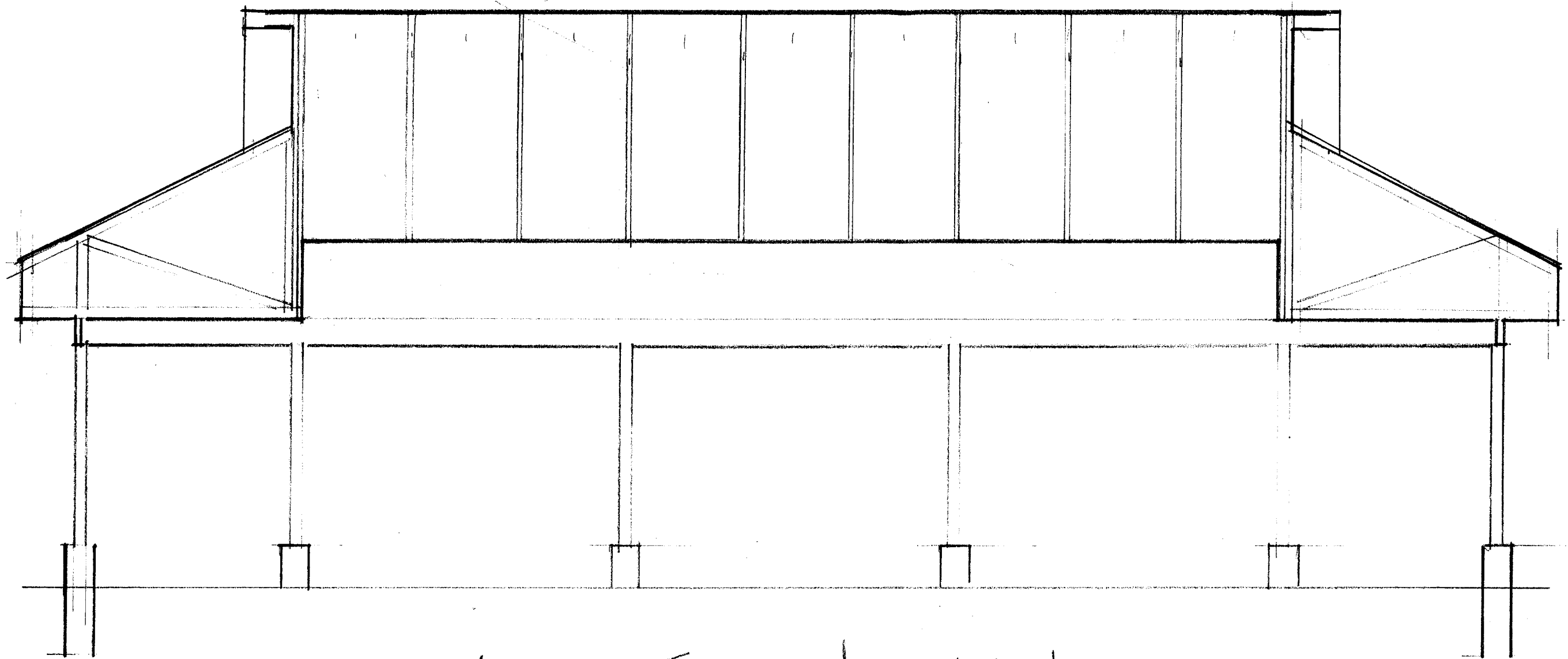
FIREMEN'S PAVILION
POINT OF GRATITUDE
CITY OF FRANKIRK, NY

FEB 25, 2003



SIDE ELEVATION 1/4" = 1'-0"

FIREMEN'S PAVILION
POINT OF ORATION
CITY OF HUNTKIRK, NY

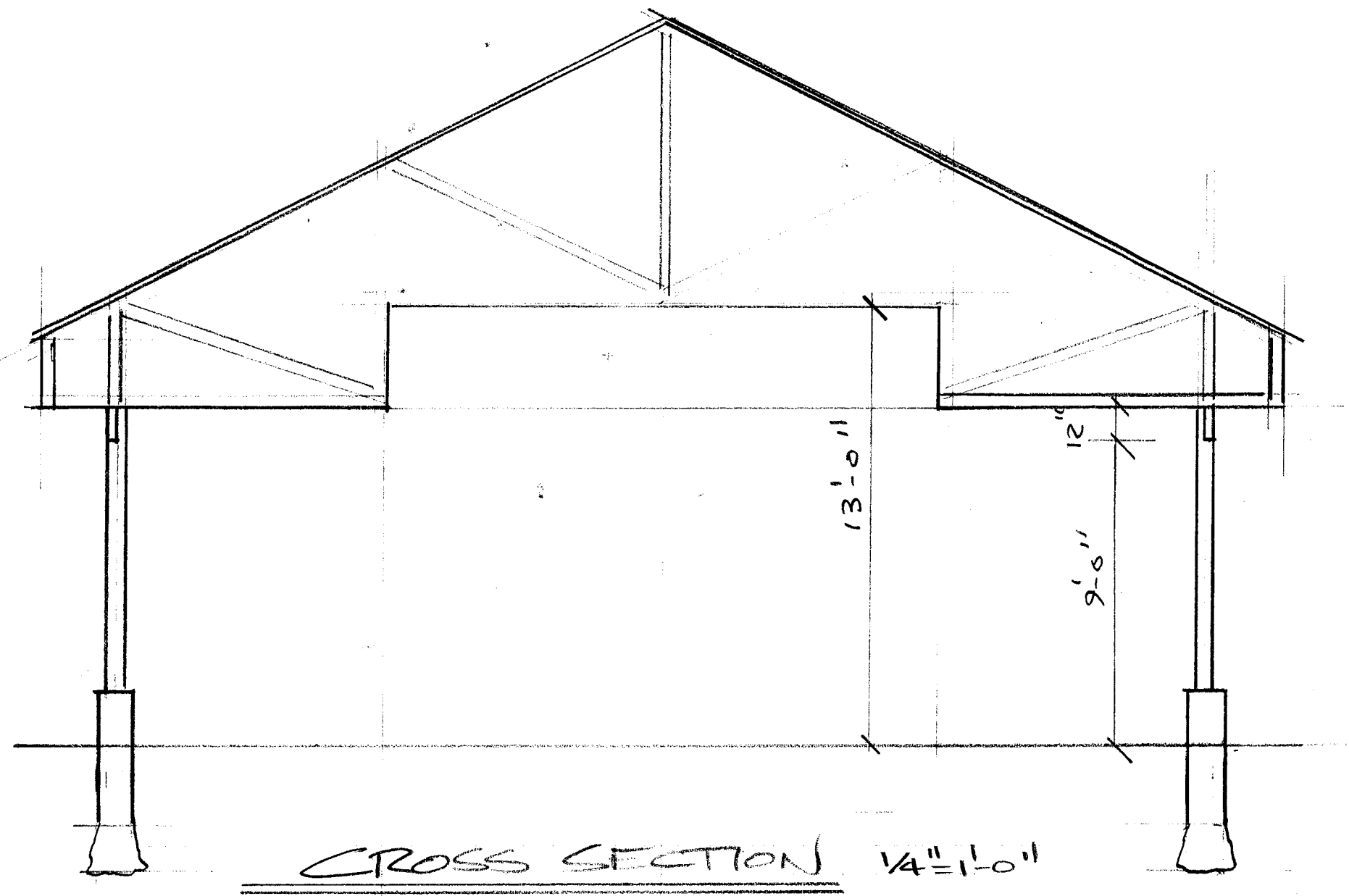


LONG SECTION

$\frac{1}{4}'' = 1'-0''$

FIREMEN'S PAVILION
TOWN OF GRATIOT
CITY OF TUNKIRK, NY

FEB 23, 2023



FIREMEN'S TOWER
POINT SERRATION
CITY OF PUNKIRK, NY

FEB 23, 2023

ROOF (WIND @ 115 MPH = 15 #/ft)
(\$NOW @ 0° = 50 #/ft)

20 GAUGE CORRUGATED METAL
SELECTED BY OWNER, 1" SCREW
TO 2x4 PURLIN @ 24" O.C.

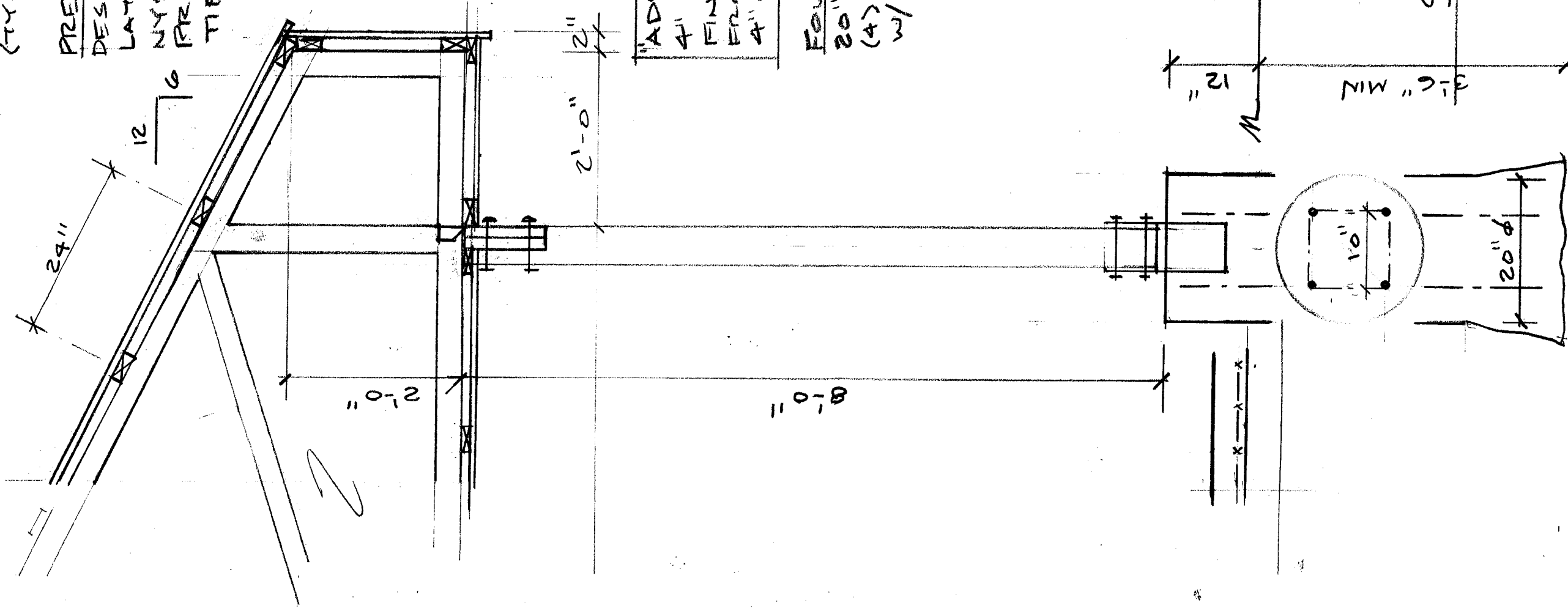
(TYPICAL @ FASCIA, SOFFIT, & CEILING)

PREFABRICATED TRUSS BY OTHER
DESIGN SUBMITAL, SPECIFICATION, &
LAYOUT WITH ADDRESS STAMPED BY
NYS PE TO BE APPROVED BY CEO
PRIOR TO INSTALL. RT IS HURRICANE
TIE

POST & HEADER
(2) 2x12 HEADER, NOTE IN
P.T. 6x6 POST, 5/16" φ x 6"
BOLTS TWO PER END, KCB66
HEAVY COLUMN BASE

"ADD-ALTERNATIVE" SLAB (100 #/ft)
4" 4000 PSI CONCRETE, BROOM
FINISH, C.D. @ 8'-0", PITCH 1/4" / FOOT
FROM MIDDLE TO EDGE, MINIMUM
4" COMPACT GRAVEL

FOUNDATION (SOIL ≥ 2000 #/ft)
20" φ 3500 PSI PIER (BELL @ BTM)
(4) #5 x 48" VERTICAL BAR @ 10' O.C.
w/ (3) #2 HORIZONTAL @ 24"



STRUCTURE SECTION

3/4" = 1'-0"

FIREMEN'S TAVILION
POINT GRATIOT
CITY OF PUNIKIRK, NY

MAR 24, 2023